

# LET'S SWING

Swing Boogie (♩ = 116)

Musical score for 'LET'S SWING' in 4/4 time, key of B-flat major. The score consists of six staves of music. The first staff starts with a treble clef, a key signature of two flats, and a 4/4 time signature. It begins with a whole rest, followed by a quarter rest, and then a series of notes: a half note G4, a quarter note A4, a quarter note B4, a quarter note C5, a quarter note B4, a quarter note A4, a quarter note G4, and a quarter note F4. A fermata is placed over the first two notes (G4 and A4), with a '2' above it. The second staff starts at measure 7 and continues the melody. The third staff starts at measure 13 and includes another fermata with a '2' above it at the end. The fourth staff starts at measure 21, the fifth at measure 27, and the sixth at measure 33, ending with a fermata.

# IT'S A KICK

Slow Rock (♩ = 84)

Musical score for 'IT'S A KICK' in 4/4 time, key of B-flat major. The score consists of three staves of music. The first staff starts at measure 39 with a treble clef, a key signature of two flats, and a 4/4 time signature. It begins with a double bar line, followed by a whole rest, and then a series of notes: a half note G4, a quarter note A4, a quarter note B4, a quarter note C5, a quarter note B4, a quarter note A4, a quarter note G4, and a quarter note F4. A fermata is placed over the first two notes (G4 and A4), with a '2' above it. The second staff starts at measure 45 and continues the melody. The third staff starts at measure 51 and ends with a fermata.

# EAT YOUR COCONUT

Mambo (♩ = 100)



# CHA-KA-TA



106

A musical staff in treble clef with a key signature of two flats (Bb, Eb). It contains six measures, each containing a whole rest.

112

A musical staff in treble clef with a key signature of two flats (Bb, Eb). It contains six measures, each containing a whole rest.

118

A musical staff in treble clef with a key signature of two flats (Bb, Eb). It contains six measures, each containing a whole rest.

124

A musical staff in treble clef with a key signature of two flats (Bb, Eb). It contains six measures, each containing a whole rest.

130

A musical staff in treble clef with a key signature of two flats (Bb, Eb). It contains six measures, each containing a whole rest.

136

A musical staff in treble clef with a key signature of two flats (Bb, Eb). It contains six measures, each containing a whole rest.

142

A musical staff in treble clef with a key signature of two flats (Bb, Eb). It contains six measures, each containing a whole rest.

148

A musical staff in treble clef with a key signature of two flats (Bb, Eb). It contains six measures, each containing a whole rest.

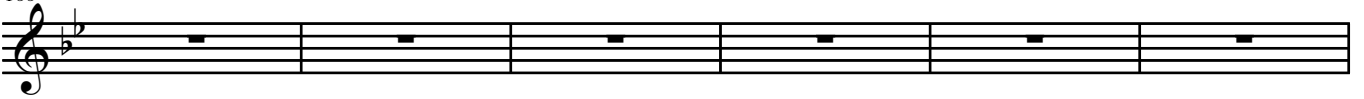
154

A musical staff in treble clef with a key signature of two flats (Bb, Eb). It contains six measures, each containing a whole rest.

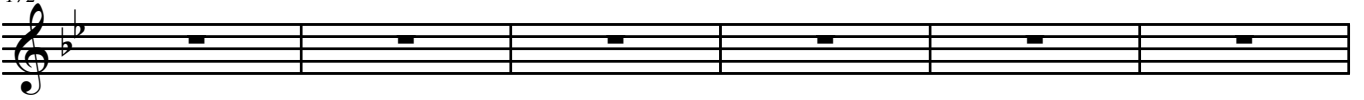
160

A musical staff in treble clef with a key signature of two flats (Bb, Eb). It contains six measures, each containing a whole rest.

166



172



178



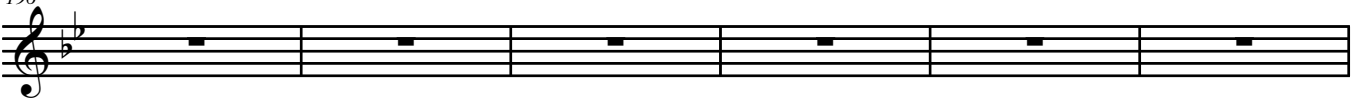
184



190



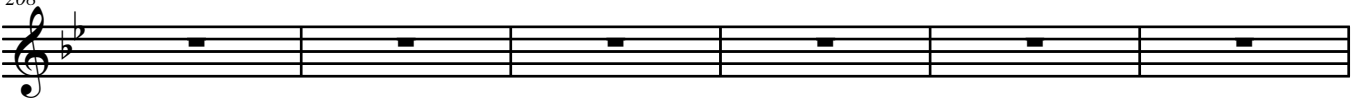
196



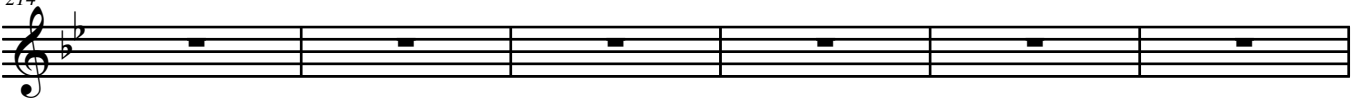
202



208



214



220

